

---

**Passkeys allow passwordless login. Instead of using a password, you can connect to your Microsoft account on your smartphone or tablet, via Face ID, Touch ID or PIN. This not only simplifies the registration process, but also increases security.**

### Content

1. Prerequisites .....	1
2. Register Passkey for Android in the Microsoft Authenticator app .....	2
3. Using the Passkey .....	5
3.1 Registration on the smartphone.....	5
3.2 Login on PC.....	6
4. Using the Passkey with Biometric Data .....	7

### 1. Prerequisites

To use passkeys on Android devices, you need at least Android version 14.

You can check the software level of your phone on the device under **Settings -> Phone Info -> Software Information**.

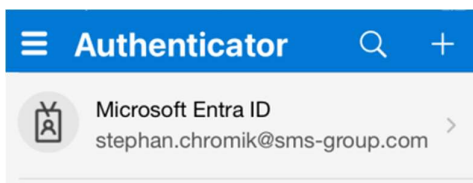
If a software update is necessary, you can install it under **Settings -> Software - Update**.

**To use passkeys for corporate apps, the following settings must be made in the Microsoft Authenticator app in the work profile.**

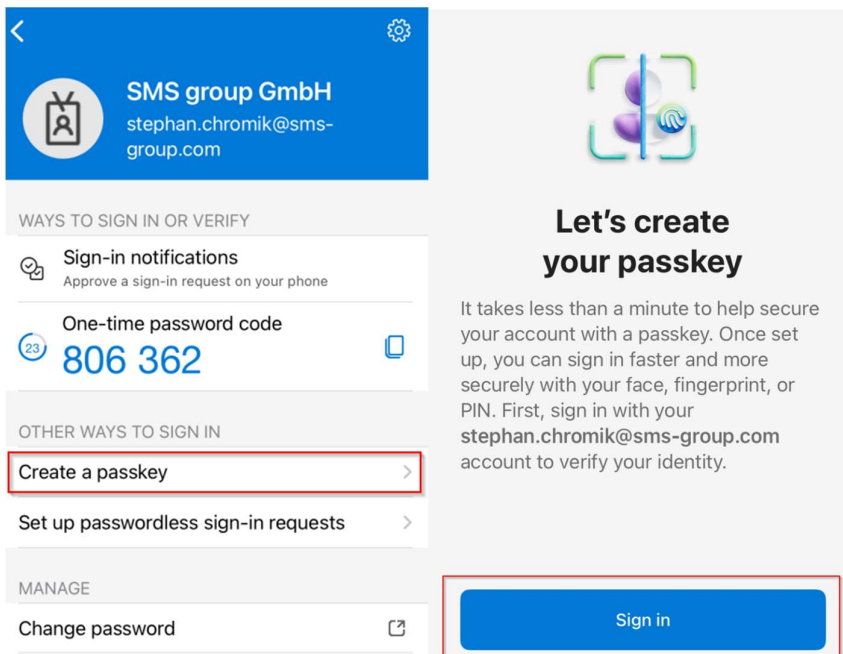
## 2. Register Passkey for iOS in the Microsoft Authenticator App

To register a passkey in the Microsoft Authenticator app, please follow these steps.

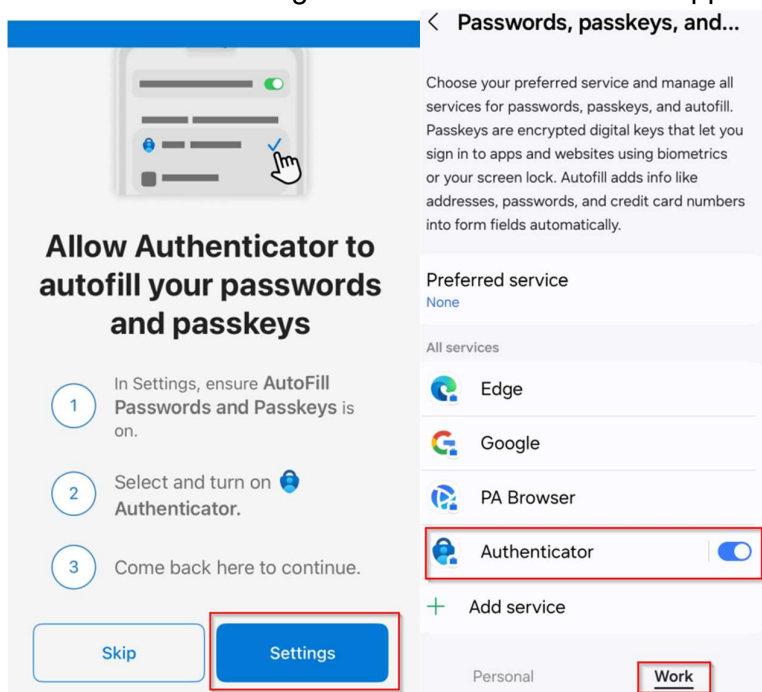
1. Open the Microsoft Authenticator app and select your SMS group account.



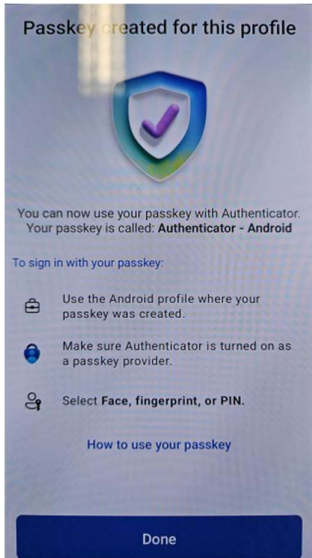
2. Open the **Create Passkey** menu, in the next window **Sign In**



3. In some cases, you will have to perform a multifactor authentication.
4. After successful authentication, go to the **Settings menu -> General Administration -> Passwords, Passkeys and AutoFill**. Select the **work profile** and then activate the **authenticator**. Then go back to the Authenticator app.



5. If the operation was successful, you will receive the following message. Your passkey is now set up.



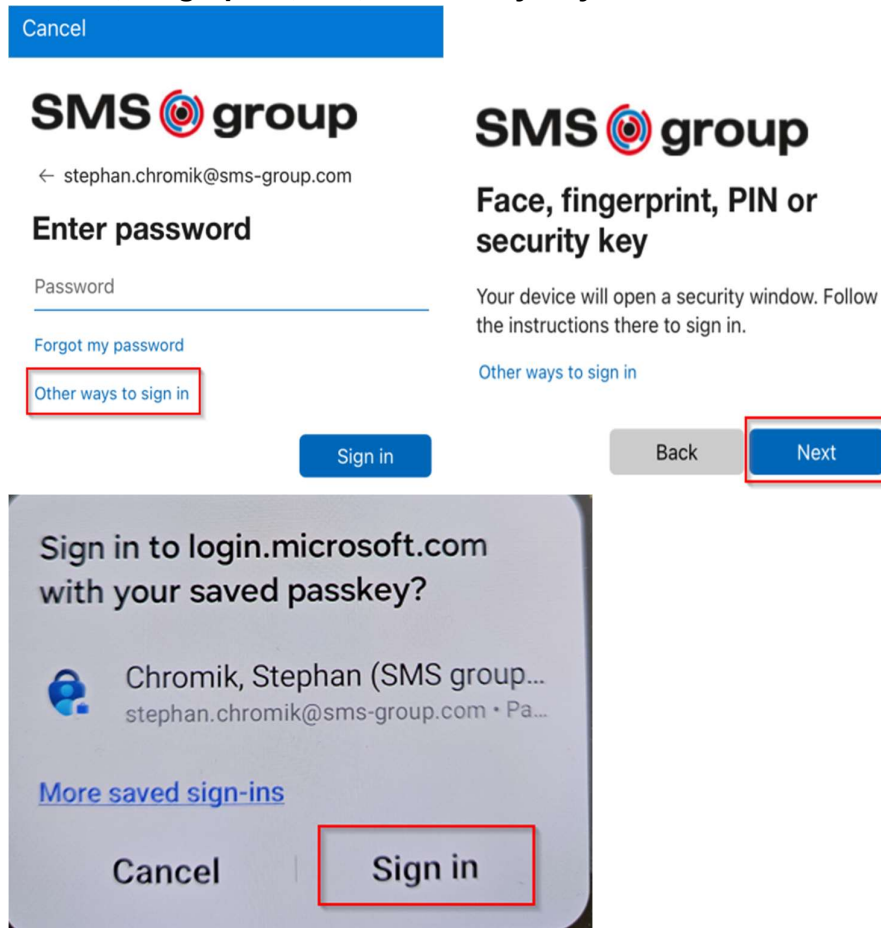
### 3. Using the Passkey

After successfully setting up the passkey, you can use it to log in to Microsoft services without a password. A distinction must be made here whether you want to log in to a service on your smartphone or PC.

#### 3.1 Login on your smartphone

For example, if you want to log in to the Outlook app, you will be suggested to log in with **facial recognition, fingerprint, PIN or security key**. Confirm with **Next** and then **Continue**. Now enter your PIN (which you also use to unlock the Microsoft Authenticator)

If you're asked for a password when you sign in, just select **More sign-in methods**, then **select Face ID, Fingerprint, PIN, or Security Key**.

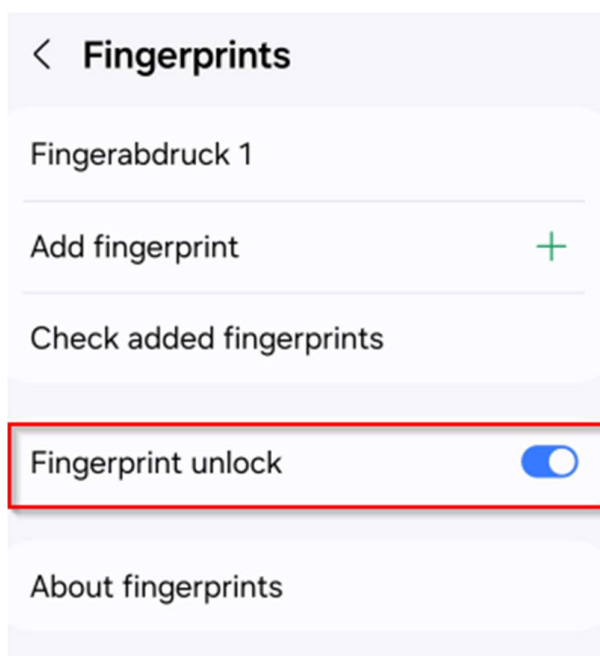




#### 4. Using the Passkey with Biometric Data

If your smartphone supports it, you can also use biometric data instead of a PIN for authentication.

Touch ID (fingerprint) for the workspace on your Android can be found in **Settings -> Security and Privacy -> Other security settings -> Work profile security -> fingerprints**.



Register your fingerprint via **Add fingerprint** and then check that the **Unlock by fingerprint option** is activated.

If your smartphone supports Face ID, you can activate it in the **menu Settings -> Security and Privacy -> Other Security Settings -> Work Profile Security -> Face Recognition**.

**Biometric data is stored solely on your smartphone. No third party has access to this data.**