
Passkeys allow passwordless logins. Instead of using a password, you can connect to your Microsoft account on your smartphone or tablet, via Face ID, Touch ID or PIN. This not only simplifies the registration process but also increases security.

Content

1. Prerequisites	1
2. Register Passkey for iOS in the Microsoft Authenticator App	2
3. Using the Passkey	5
3.1 Registration on the smartphone.....	5
3.2 Login on PC.....	6
4. Using the Passkey with Biometric Data	7

1. Prerequisites

To use passkeys on iOS devices, you need at least iOS 17.

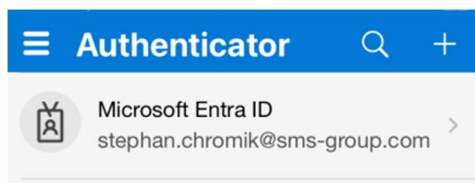
You can check the software status on the device under **Settings -> General -> About**

If a software update is necessary, you can install it under **Settings -> General -> Software Update**

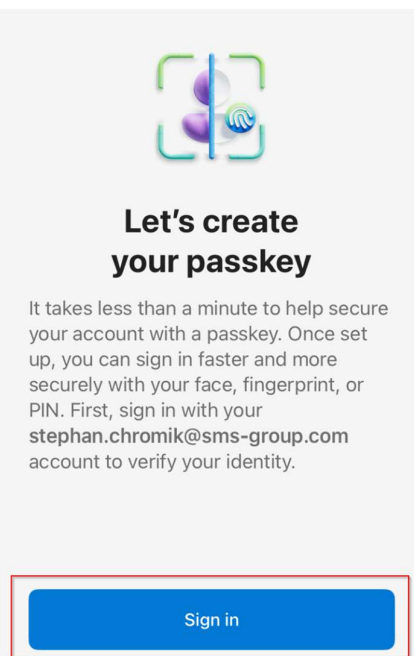
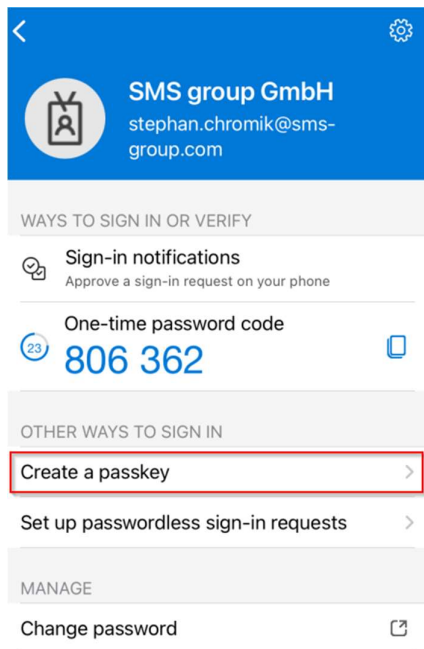
2. Register Passkey for iOS in the Microsoft Authenticator App

To register a passkey in the Microsoft Authenticator app, please follow these steps.

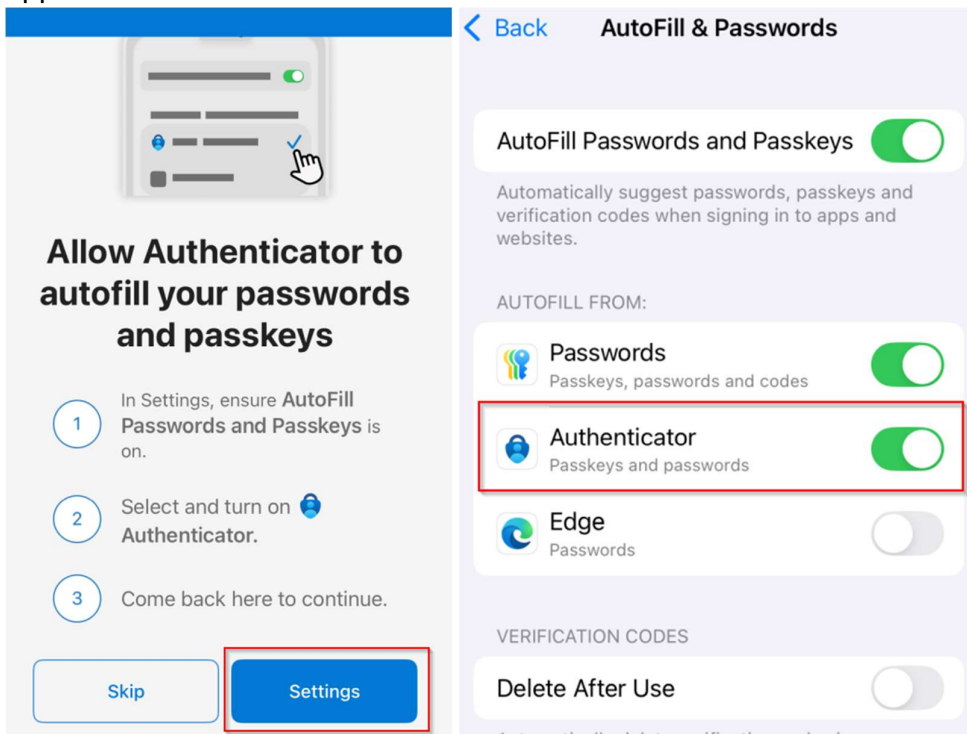
1. Open the Microsoft Authenticator app and select your SMS group account.



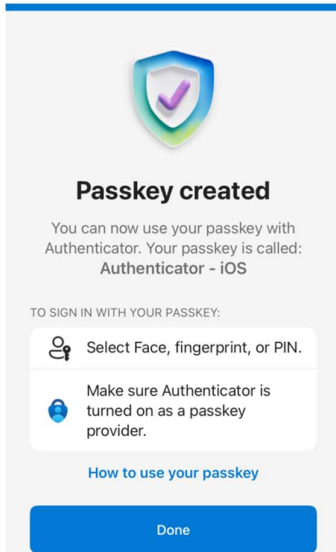
2. Open the **Create a Passkey** menu and in the next window **Sign In**



3. In some cases you will have to perform a multifactor authentication.
4. After successful authentication, go to the **Settings** of your iPhone / iPad and allow the **Microsoft Authenticator** to automatically fill in passkeys and passwords. Then go back to the Authenticator app.



5. If the operation was successful, you will receive the following message. Your passkey is now set up.



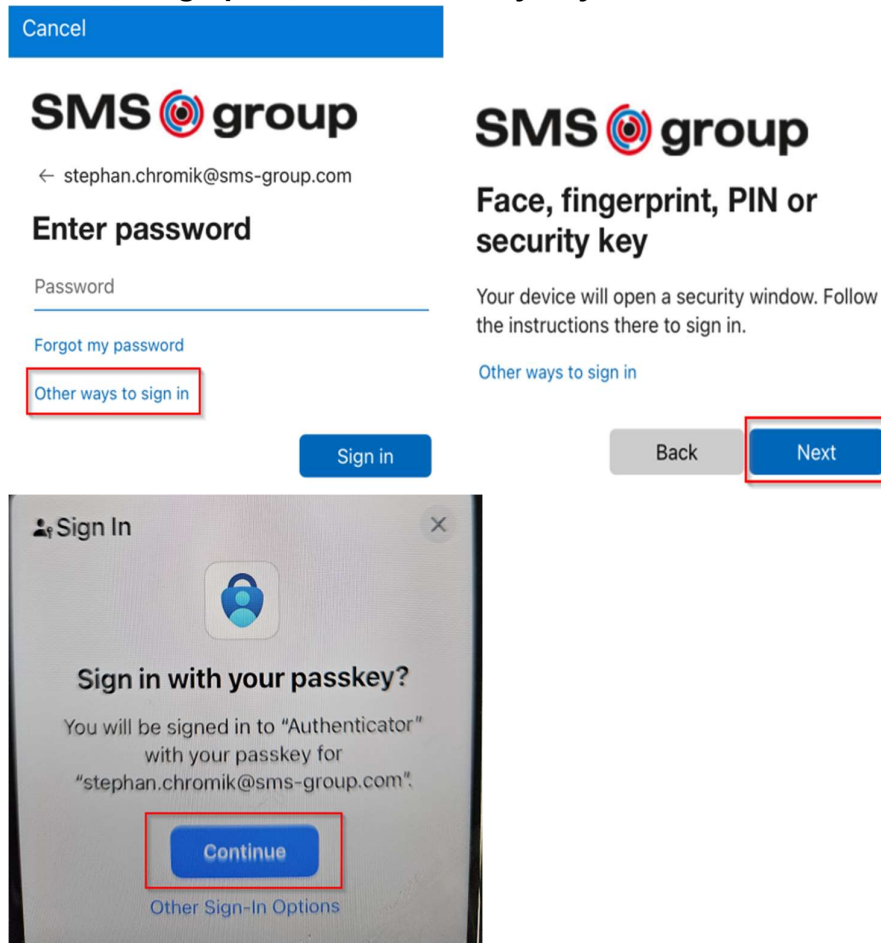
3. Using the Passkey

After successfully setting up the passkey, you can use it to log in to Microsoft services without a password. A distinction must be made here whether you want to log in to a service on your smartphone or PC.

3.1 Login on your smartphone

For example, if you want to log in to the Outlook app, you will be suggested to log in with **facial recognition, fingerprint, PIN or security key**. Confirm with **Next** and then **Continue**. Now enter your PIN (which you also use to unlock the Microsoft Authenticator)

If you're asked for a password when you sign in, just select **Other ways to sign in**, then select **Face ID, Fingerprint, PIN, or Security Key**.

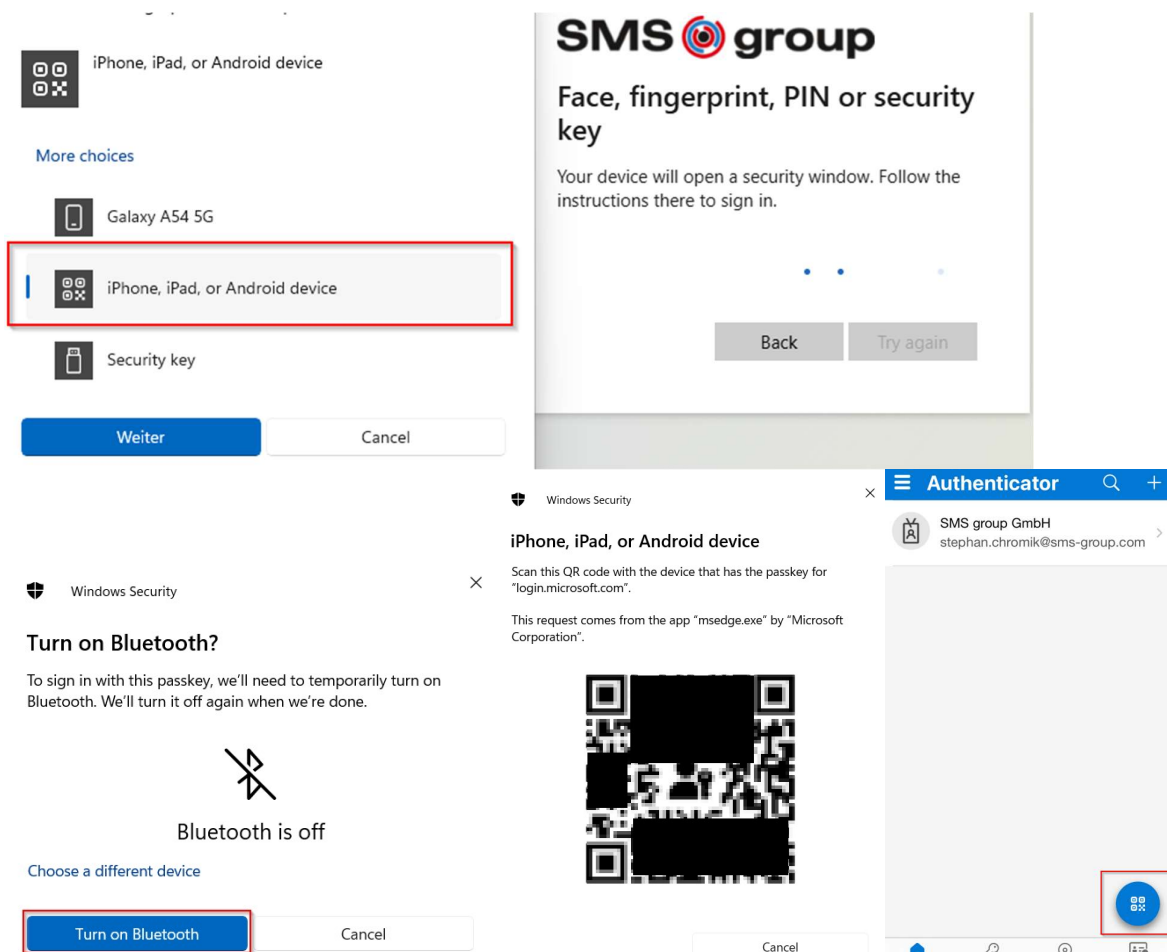


3.2 Login on PC

In order to be able to use passwordless login with the help of your smartphone on your PC, please first make sure that bluetooth is activated on your smartphone.

If you're signing in with **your face, fingerprint, PIN, or security key**, select **iPhone, iPad, or Android**. If bluetooth is disabled on your PC, you'll need to enable it for the sign-in process.

You will now be presented with a QR-code that you can scan with your Microsoft Authenticator. To do this, open the authenticator and select scan **QR-code**. Confirm the next windows by clicking **Continue**. You will now be asked to enter your PIN. This completes the sign in process.



4. Using the Passkey with Biometric Data

If your smartphone supports it, you can also use biometric data instead of a PIN for authentication. Touch ID (fingerprint) can be found on your iPhone under **Settings -> Touch ID & Passcode**. Turn on Unlock **iPhone** and then follow the on-screen instructions.



If your smartphone supports Face ID, you can turn it on in **Settings -> Face ID & Passcode**. If this menu is missing, your smartphone does not support this function.

Biometric data is stored solely on your smartphone. No third party has access to this data.